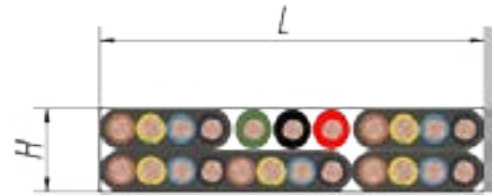


**MAXIMUM CABLE BUNDLE:** L x H = 56 x 15 mm.

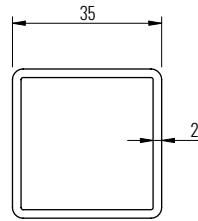
**MAX. LOAD** 40 kg. per trolley

**LENGTH OF STRAIGHT PROFILES:** 3 m.



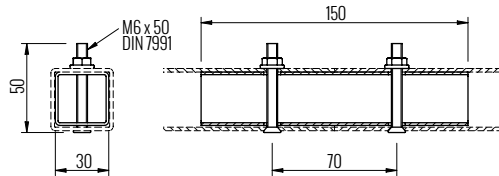
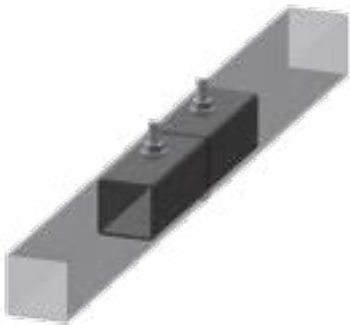
Necessary for installations with curves (minimum radius of 1 m.) and aerial high-speed layouts (up to 30 m/min in straight sections y 20 m/min in curved sections)

## C PROFILE Ref. RG3501 C PROFILE CURVED Ref. RG3501C



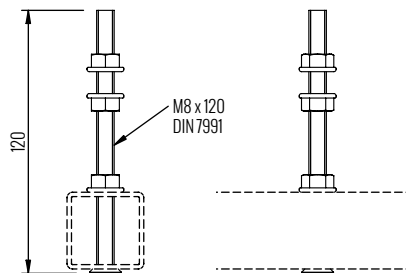
Curves	Material	Weight
Minimum radius of 1 m	Zinc plated steel (On demand, in aluminium)	2,150 kg/m

## JOINT Ref. RG3502



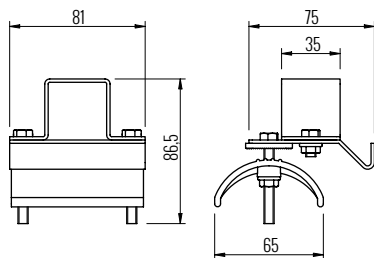
Material	Weight
Zinc plated steel	0,420 kg

## SUPPORT Ref. RG3503



Material	Weight
Zinc plated steel	0,420 kg

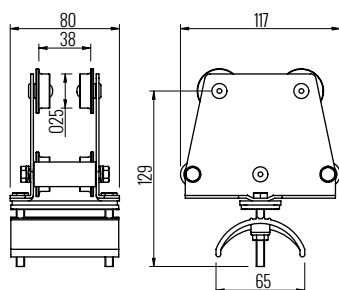
**END CLAMP Ref. RG3504**



Material	Weight
Zinc plated steel casing Polyamide saddle 6.6	0,265 kg

Option with saddle made from zinc plated sheet Ref. RG3504CH

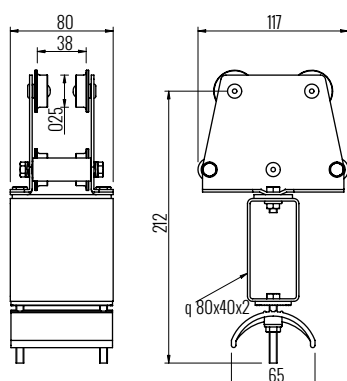
**CABLE TROLLEY Ref. RG3505**



Admissible load	Material	Weight
40 kg	Zinc plated steel body Polyamide saddle 6.6 Steel ball bearings Buffers in EPDM	0,785 kg

Option with saddle made from zinc plated sheet Ref. RG3505CH

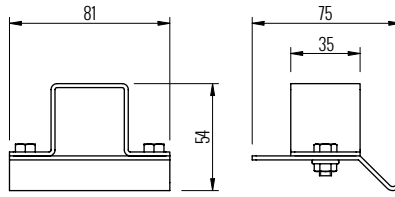
**TOWING TROLLEY Ref. RG3506**



Admissible load	Material	Weight
100 kg	Zinc plated steel body Zinc plated steel tube Polyamide saddle 6.6 Steel ball bearings Buffers in EPDM	0,570 kg

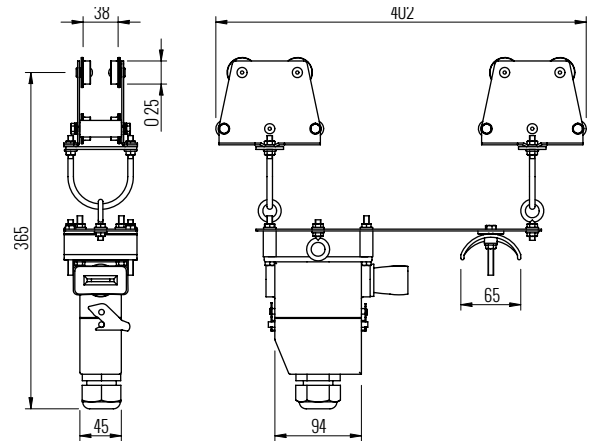
Option with saddle made from zinc plated sheet Ref. RG3506CH

END STOP Ref. RG3507



Material	Weight
Zinc plated steel	0,112 kg

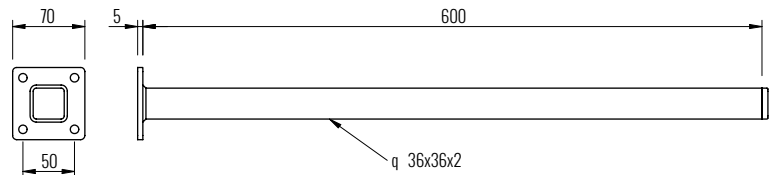
PENDANT STATION TOWING TROLLEY WITH PLUG + SOCKET 16 POLES Ref. RG3510SC



Quick plug	Material	Weight
Standardized metallic male-female of 16 poles	Zinc plated steel casing Polyamide saddle 6.6 Steel ball bearings	4,120 kg

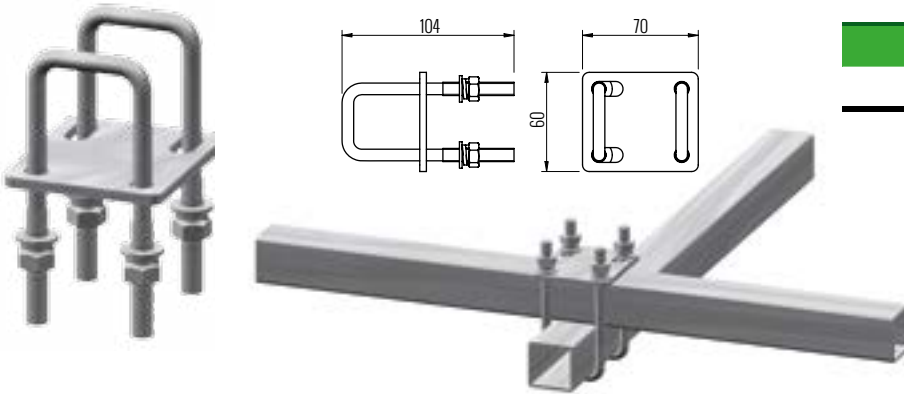
Option with zinc plated saddle: Ref. RG3510SCCH

TOWING ARM Ref. RG3514



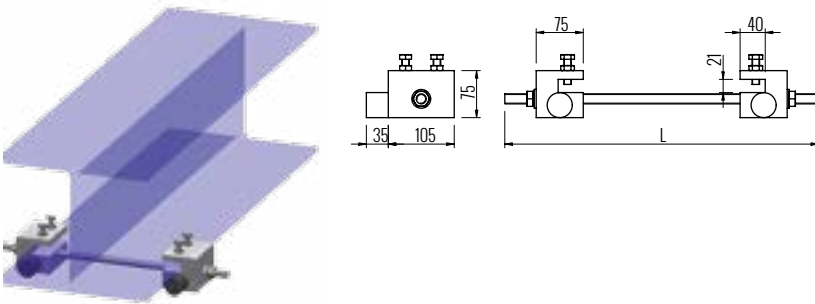
Material	Weight
Electro-welded and zinc-plated steel	1,180 kg

**END CLAP FOR PIPE OF 30 mm. Ref. RG3520**



Material	Weight
Zinc plated steel	0,280 kg

**BUFFER CLAMPS FOR HOISTS REF. RG3560-L**



Material	Weight
Zinc plated steel clamps that are fixed to the hoist runway Metallic rubber buffers.	L=0,50 m. 6,350 kg.

**UNIVERSAL SUPPORT**

- Ref. SU-600** for Flange < 10 mm
- Ref. SUG-600** for Flange > 10 mm
- Ref. SUV-600** for Flange < 40 mm

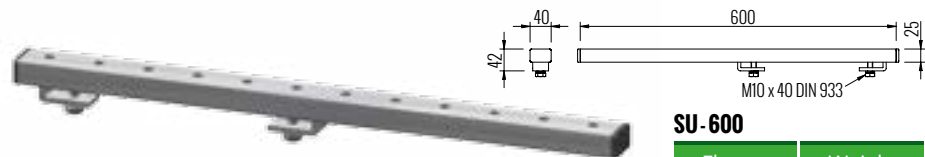
Eliminates welding and allows corrections for good alignment of the system.

Recoverable in case of change of location or re-design of the line.

Consisting of galvanized steel perforated profile and 2 galvanized steel clamps for fixing with nuts and bolts, to standardized beam in shapes like IPN, IPE, IPS, IPR, HEB, HEA or HEM.

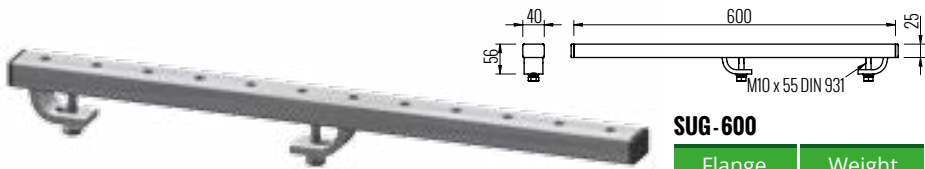
Standard length of profile: 600 mm

**(Can be supplied in other lengths on demand)**



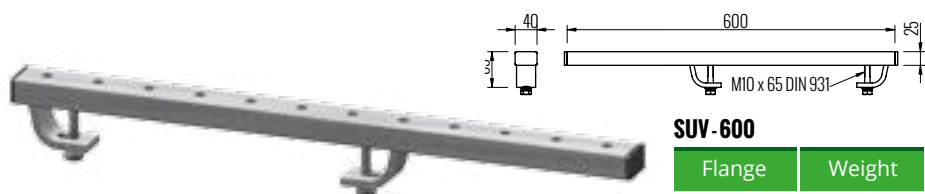
**SU-600**

Flange	Weight
<10 mm	1.292 g



**SUG-600**

Flange	Weight
>10 mm	1.432 g



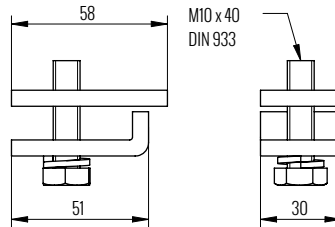
**SUV-600**

Flange	Weight
<40 mm	1.500 g

BEAM CLAMP FOR FLANGE >10 mm Ref. RG8025



System component RG SU-600  
Made from threaded sheet, curved sheet, M10 bolt and grower washer

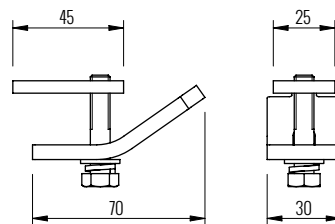


Material	Weight
Galvanized steel	205 g

BEAM CLAMP FOR FLANGE >10 mm Ref. RG8030



System component RG SUG-600.  
Made from threaded sheet, curved sheet, M10 bolt and grower washer

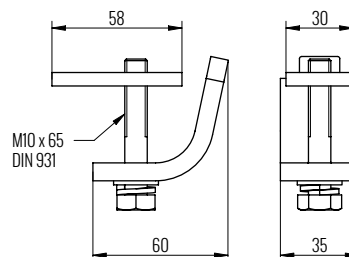


Material	Weight
Galvanized steel	275 g

BEAM CLAMP FOR FLANGE < 40 mm Ref. RG8040

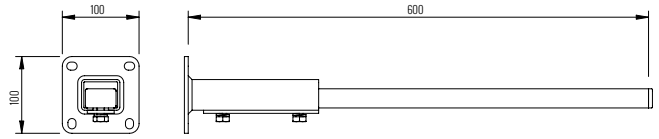


System component RG SUV-600  
Made from threaded sheet, curved sheet, M10 bolt and grower washer



Material	Weight
Galvanized steel	304 g

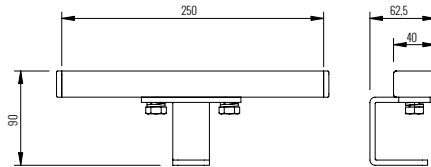
**WALL SUPPORT Ref. RG20**



Material	Weight
Galvanized steel	2.200 g

Eliminates welding and allows corrections for good alignment of the system.  
 Recoverable in case of change of location or re-design of the line.  
 Galvanized steel Standard profile length: 600 mm.  
**(Can be supplied in other lengths on demand).**

**SLIDING CEILING SUPPORT Ref. RG23**



Material	Weight
Galvanized steel	850 g

Eliminates welding and this model allows perpendicular corrections to the line for good alignment of the system.  
 Recoverable in case of change of location or re-design of the line. Galvanized steel  
 Standard profile length: 250 mm. Weight: 850 g.  
**(Can be supplied in other lengths on demand).**

**SCHEMATIC DESCRIPTION OF ASSEMBLY SERIES 35**



Minimum curve radius = 1m.

**Available in Stainless Steel**

