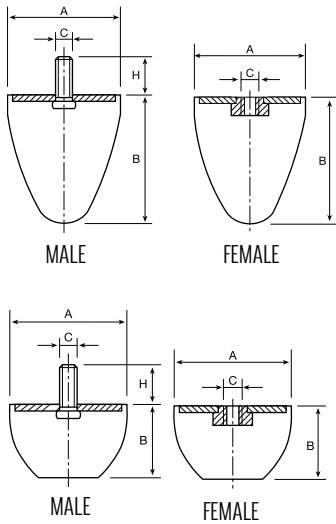


Manufactured from a mixture of rubber that allows large deformations with high-energy absorption. Their shape provides progressive contact allowing gradual energy absorption without great instant efforts, in addition avoiding transmission of noises and vibrations.

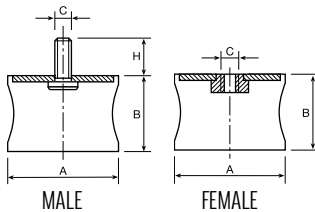
Application: End stops for cranes and hoists

PROGRESSIVE BUFFERS



| TIPO | A | B | C | H | DYNAMIC | | | REF.* |
|-------|-----|----|-----|----|-----------|------------|-----------------------|-------|
| | | | | | Load (kg) | Arrow (mm) | Energía a 1m/s (kg·m) | |
| T-25 | 25 | 20 | M8 | 20 | 100 | 8 | 0,3 | RG300 |
| T-30 | 30 | 16 | M6 | 16 | 140 | 15 | 0,6 | RG301 |
| T-50 | 50 | 20 | M8 | 20 | 340 | 25 | 3 | RG308 |
| T-50 | 50 | 35 | M8 | 35 | 370 | 32 | 4 | RG302 |
| T-50 | 50 | 20 | M8 | 20 | 400 | 28 | 3,7 | RG312 |
| T-70 | 72 | 30 | M12 | 30 | 550 | 26 | 5 | RG303 |
| T-95 | 95 | 45 | M16 | 45 | 1100 | 37 | 12 | RG304 |
| T-85 | 84 | 35 | M12 | 35 | 1500 | 20 | 20 | RG309 |
| T-120 | 120 | 45 | M16 | 45 | 3000 | 22 | 34 | RG305 |
| T-220 | 220 | 80 | M24 | 80 | 15000 | 40 | 250 | RG306 |

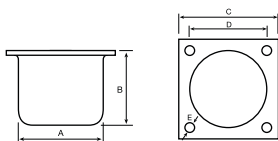
DIABOLO BUFFERS



| TIPO | A | B | C | H | DYNAMIC | | STATIC | | REF.* |
|------|----|----|-----|----|----------------|------------|-----------------|------------|-------|
| | | | | | Max load (daN) | Arrow (mm) | Max load. (daN) | Arrow (mm) | |
| R.3 | 30 | 23 | M8 | 20 | 90 | 9 | 40 | 5 | RG311 |
| R.7 | 44 | 42 | M8 | 20 | 100 | 10 | 50 | 6 | RG312 |
| R.1 | 60 | 44 | M8 | 20 | 100 | 10 | 40 | 4 | RG316 |
| R.2 | 60 | 44 | M8 | 20 | 200 | 12 | 75 | 5,5 | RG313 |
| R.4 | 60 | 60 | M10 | 25 | 350 | 15 | 150 | 8 | RG318 |
| R.8 | 60 | 31 | M10 | 25 | 275 | 14 | 100 | 7 | RG314 |
| R.5 | 80 | 65 | M14 | 35 | 800 | 16 | 300 | 9,5 | RG315 |
| R.6 | 95 | 70 | M16 | 45 | 1000 | 18 | 400 | 9,5 | RG317 |

* ADD "M" (MALE) or "H" (FEMALE) TO THE REFERENCE AS NEEDED

ROUND BUFFERS



| TIPO | A | B | C | D | E | STATIC | | | REF.* |
|-------|-----|-----|-----|-----|------|-----------|------------|-----------------------|-------|
| | | | | | | Load (kg) | Arrow (mm) | Energy to 1m/s (kg·m) | |
| T-150 | 150 | 125 | 185 | 150 | 13,5 | 5000 | 50 | 125 | RG307 |
| T-250 | 250 | 208 | 315 | 250 | 14,5 | 40000 | 100 | 1250 | RG310 |